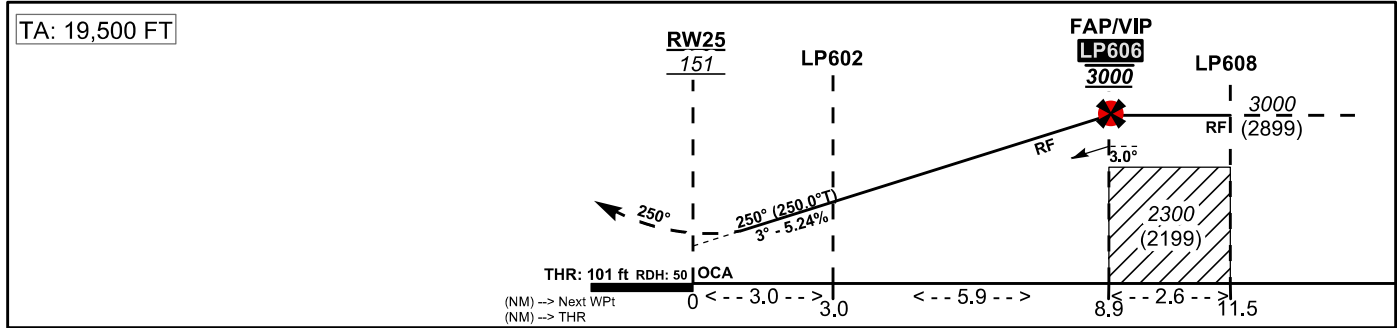
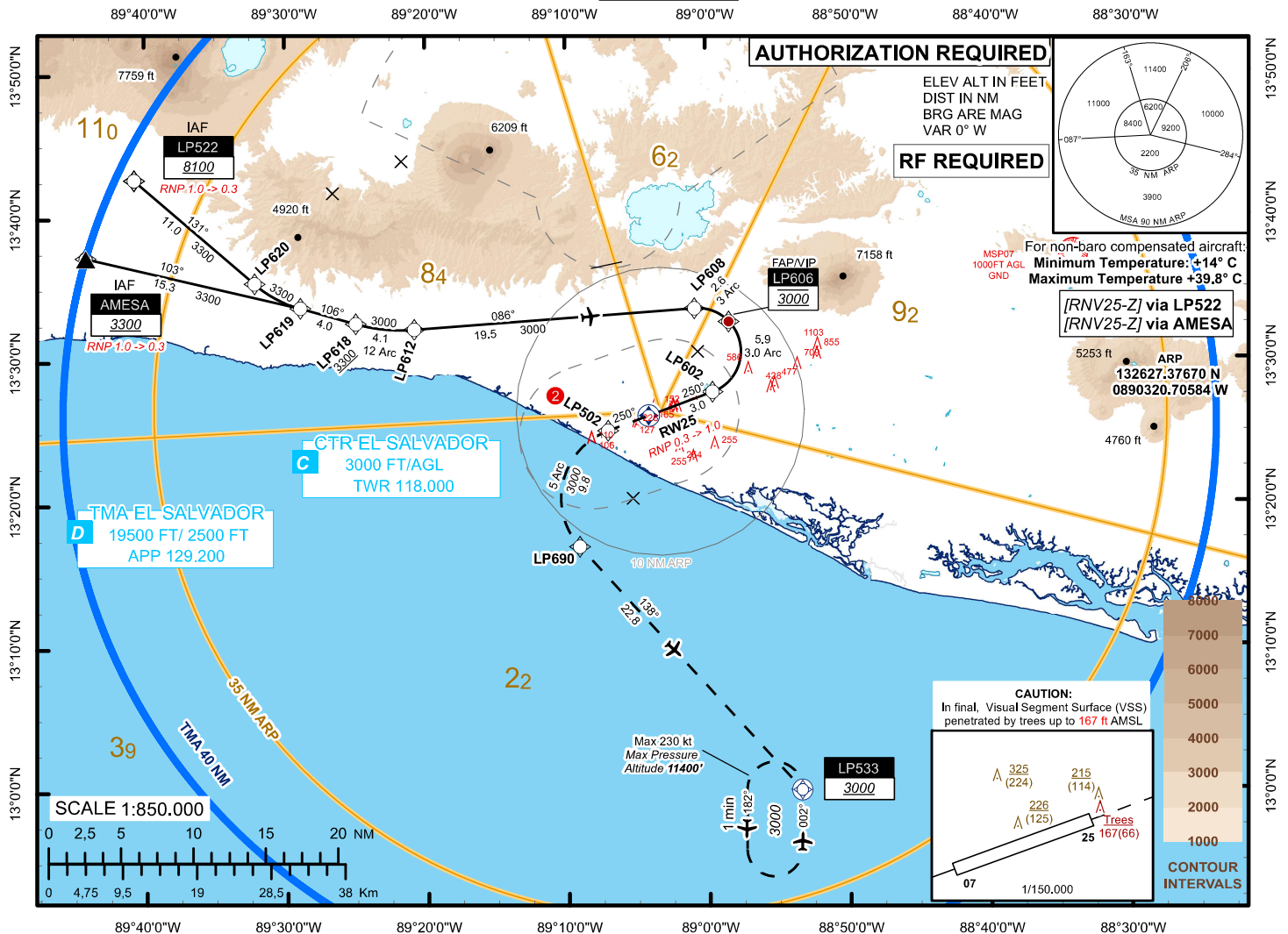


INSTRUMENT  
APPROACH  
CHART

AERODROME ELEV 101 ft  
HEIGHTS RELATED TO  
THR RWY 25 ELEV 101 ft

ATIS 127.600  
APP 129.200  
TWR 118.000

EL SALVADOR / EL SALVADOR INTL  
SAN OSCAR ARNULFO ROMERO Y GALDAMEZ  
RNP Z RWY 25 (AR)



CAT	RNP AR FINAL 0.3				MISSED APPROACH		
	MA RNP 1.0		MA RNP 0.3		CAT	Ceiling	Visibility
	OCA (H)	DA (H)	OCA (H)	DA (H)			
A	374' (273')	380' (279')	348' (247')	350' (249')	A	400'	1600m
B	395' (294')	400' (299')	357' (256')	360' (259')	B	400'	1600m
C	414' (313')	420' (319')	365' (264')	370' (269')	C	400'	1600m
D	433' (332')	440' (339')	376' (275')	380' (279')	D	400'	1600m

M.A. Climb Gradient: 2.5% 152 FT/NM

1. Climb to 3000 via the RNAV (RNP) missed approach track to LP533.  
2. At LP533 hold or start a new approach via LP533, expect ATC instructions.  
3. RNP 0.3 is required until LP502.

CHANGES: HOLDING FIX SYMBOL

AERO INFO DATE:  
27 NOV 25

AIM - COCESNA

AMDT 53/25